

A Simple to Build Twin Bed

DIY Plans to Build a Delilah Twin Bed

This simple bed is very easy to construct and is perfect for those new to woodworking or those who just want to take on an easy project. The DIY plans to build a Delilah bed use off the shelf boards and have narrow pieces on the headboard and footboard. Though there are a lot of pocket holes to drill, they are easily filled using a product such as a Dry-Dex (if the bed will be painted) or a wood filler.

build a
delilah twin bed



DESIGNS BY STUDIO C

Materials:

- 1-1/4" pocket hole screws
- 2" pocket hole screws
- 1-3/4" brad nails
- 1-1/4" screws

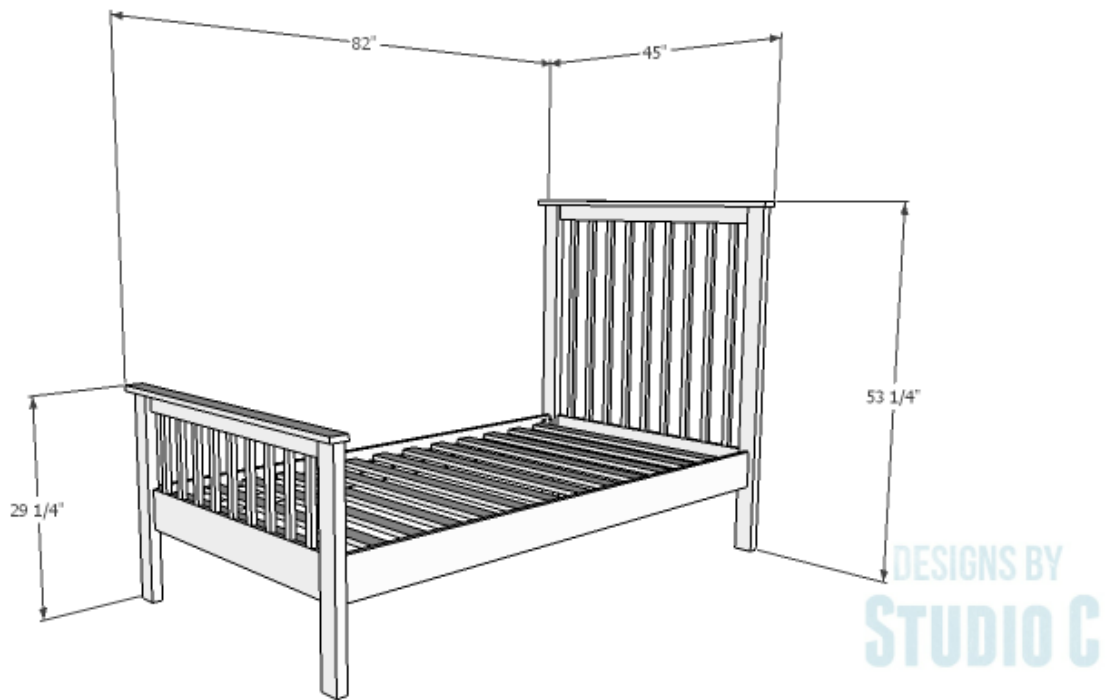
- Wood glue
- Sandpaper (100, 150, 220 grits)
- Finishing supplies (primer & paint, or stain, sealer)

Lumber:

- 2 – 1×2 at 8′
- 9 – 1×3 at 8′
- 3 – 1×6 at 8′
- 1 – 1×12 at 4′
- 2 – 2×4 at 8′

Cut List:

- 2 – 2×4 (ripped to 2-3/4" wide) at 52-1/2" – Headboard Legs
- 2 – 1×3 at 38" – Headboard & Footboard Framing
- 2 – 1×6 at 38" – Headboard & Footboard Framing
- 2 – 1×3 at 45" – Headboard & Footboard Top Trim
- 8 – 1" strips (ripped from 1×12) at 34-1/2" – Headboard Framing Spindles
- 2 – 2×4 (ripped to 2-3/4" wide) at 28-1/2" – Footboard Legs
- 8 – 1" strips (ripped from 1×12) at 10-1/2" – Footboard Framing Spindles
- 2 – 1×6 at 78" – Side Rails
- 2 – 1×2 at 78" – Side Rail Slat Support
- 13 – 1×3 at 40" – Slats



Click on the drawings for a larger view!

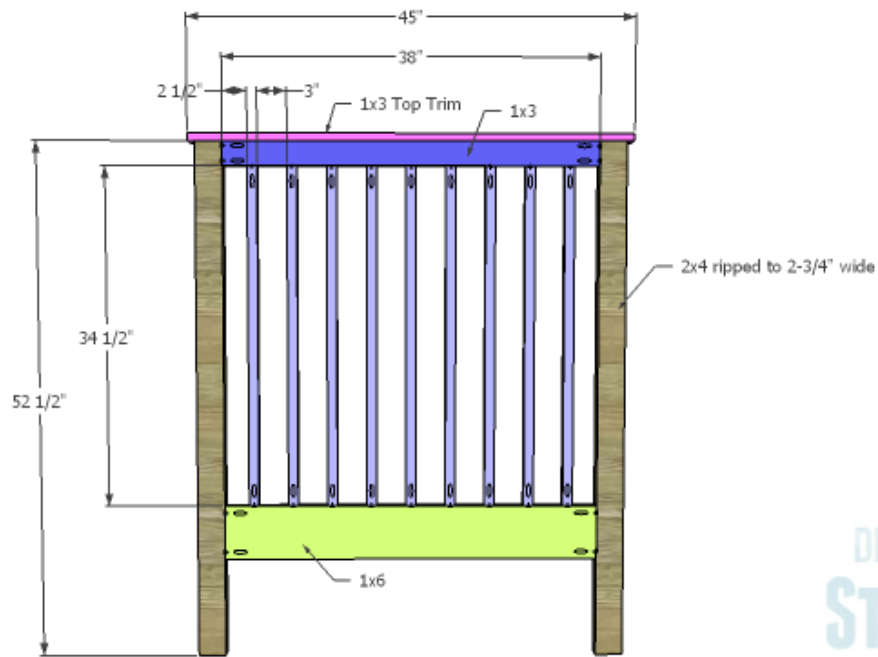
Step One

Cut the pieces for the headboard legs. The 2x4 pieces will be ripped to 2-3/4" wide.

Cut the pieces for the headboard framing. For the framing spindles, cut the 1x12 into 1" strips then cut them to length.

Set the pocket hole jig for 3/4" material and drill pocket holes in each end of the framing pieces. Drill two pocket holes in each end of the 1x3 and 1x6 pieces, and one pocket hole in each end of the framing spindles. Assemble the headboard as shown using glue and 1-1/4" pocket hole screws. The back face of the framing pieces will be flush with the back faces of the legs.

Cut the piece for the top trim. The back edge of the top trim will be flush with the back face of the framing and legs, and will overhang the sides by 3/4". Secure the trim in place with glue and 1-3/4" brad nails.

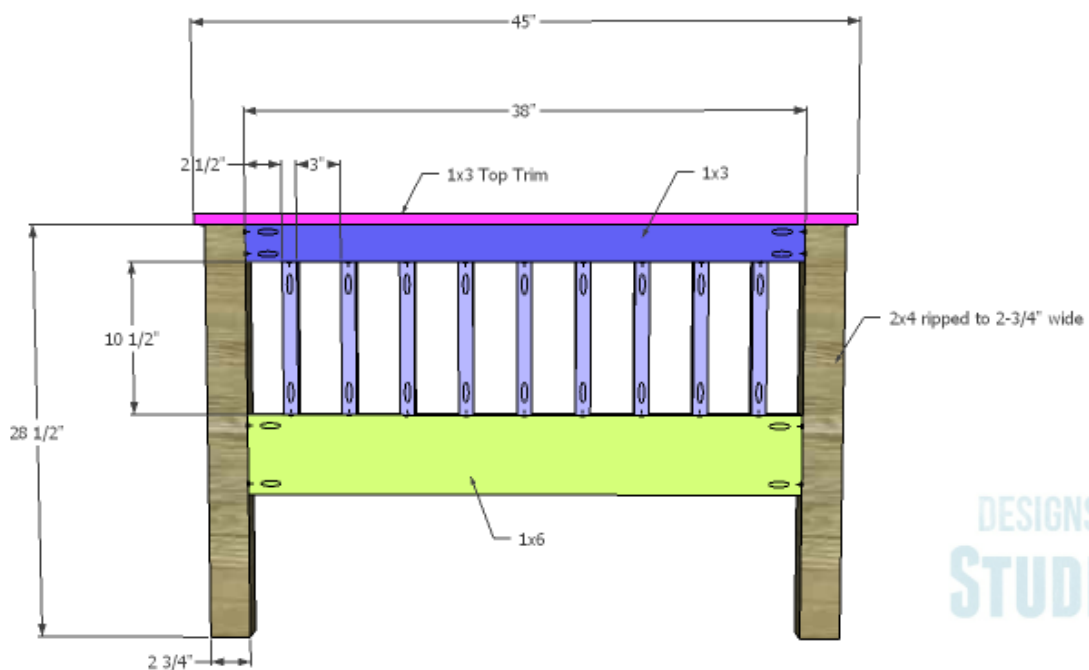


DESIGNS BY
STUDIO C

Step Two

The footboard is constructed in exactly the same manner as the headboard – the legs and framing spindles are shorter!

Fill the pocket holes in the headboard and footboard with filler. Let the filler dry and then thoroughly sand.

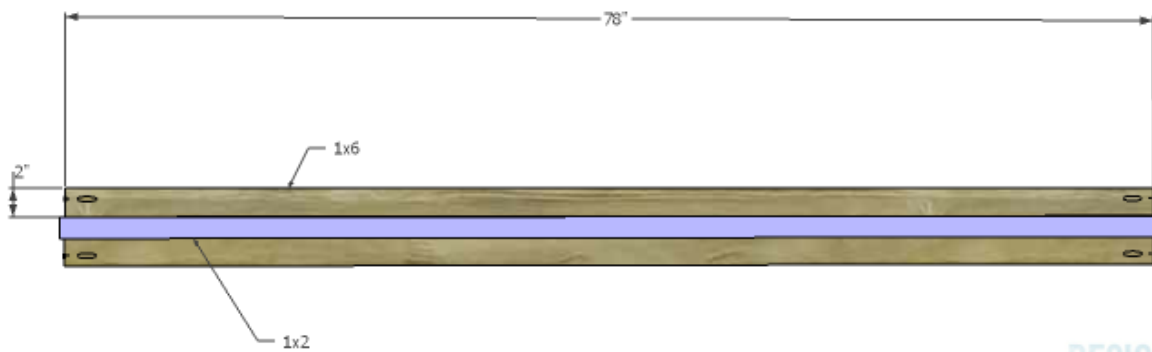


DESIGNS BY
STUDIO C

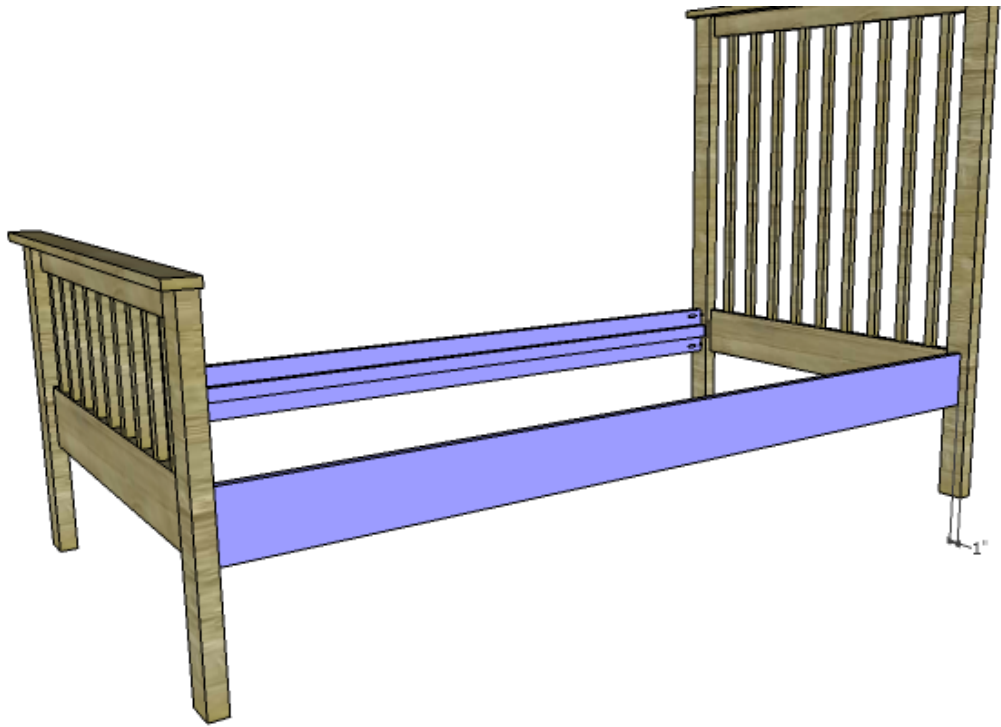
Step Three

Cut the pieces for the side rails and the side rail slat supports. Drill pocket holes in each end of the side rails. Secure the slat support to the side rail as indicated in the drawing using glue and 1-1/4" screws.

Secure the side rails to the headboard and footboard using 2" pocket hole screws. DO NOT use glue – this way the bed can be disassembled if necessary. The outside face of the side rail is located 3/4" back from the side edge of the legs.



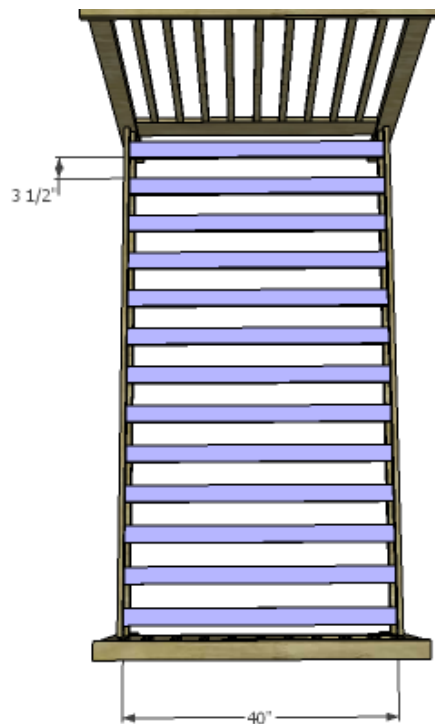
DESIGNS BY
STUDIO C



DESIGNS BY
STUDIO C

Step Four

Cut the pieces for the slats. The slats are spaced approximately 3-1/2" apart. Secure the slats to the slat supports using 1-1/4" screws. DO NOT use glue.



DESIGNS BY
STUDIO C

Finish as desired.

This bed would be perfect for a kid's room or a guest room, and would make a perfect gift like the [one I made for my daughter](#)! Have any questions about the DIY plans to build a Delilah Twin Bed? Leave a comment below!