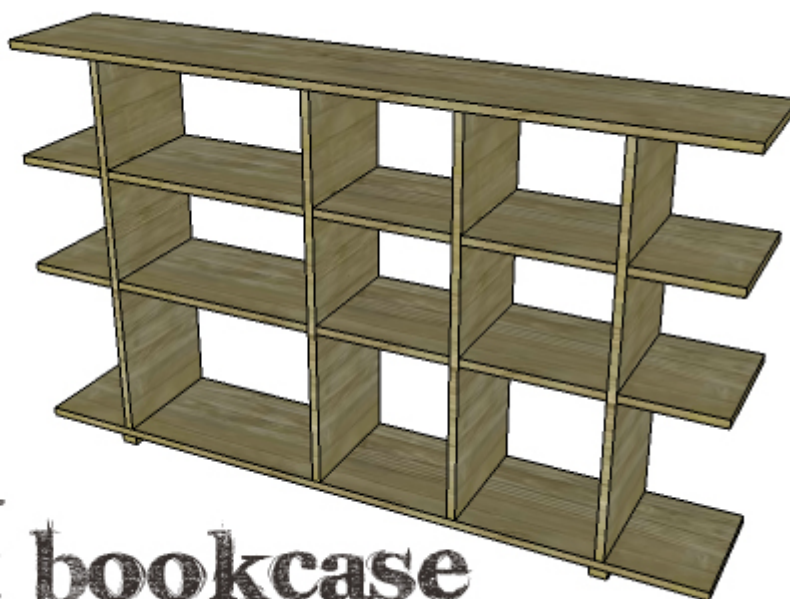


A Quick and Easy Bookcase

DIY Plans to Build a Bardot Bookcase

This bookcase is the perfect project for those who are new to woodworking... The only tools required for the DIY plans to build a Bardot Bookcase are a drill and a jigsaw. The lumber is straight off the shelf 1×12 boards that can be cut to length at most home improvement centers. Notches will be cut into the shelves and dividers with the jigsaw, and the bookcase is put together like a puzzle. This is a super-easy project that can be completed in a weekend!



**build a
bardot bookcase**
DESIGNS BY STUDIO C

Materials:

- 1-1/2" screws
- 2-1/2" screws
- 1-1/4" brad nails
- Wood glue

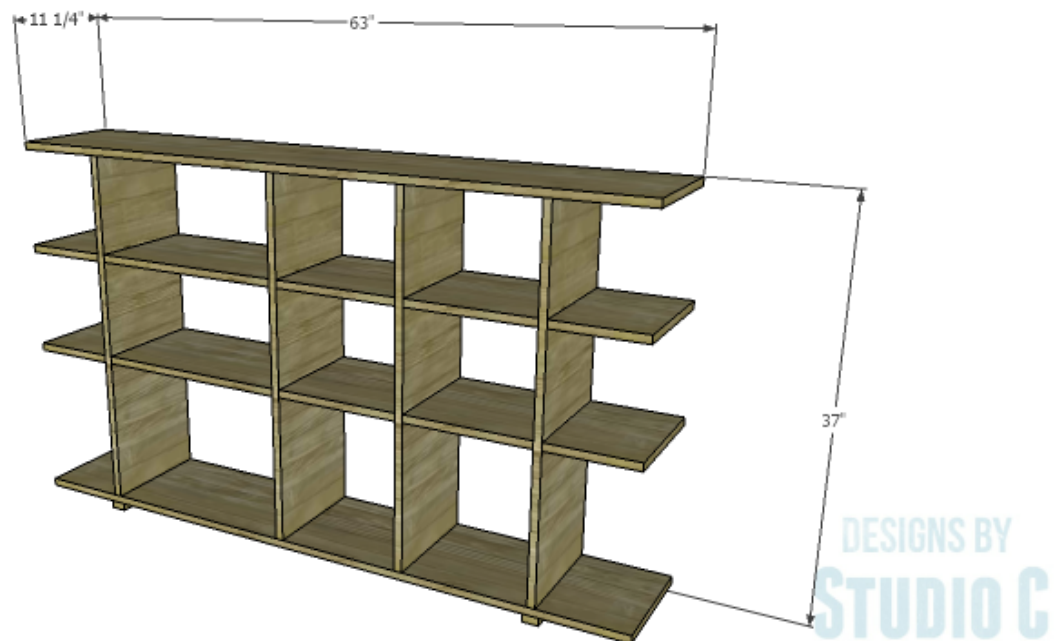
- Sandpaper (100, 150, 220 grits)
- Finishing supplies (primer & paint, or stain, sealer)

Lumber:

- Scrap pieces of 1x2 at 11-1/4" each
- 4 – 1x12 at 6'
- 4 – 1x12 at 8'

Cut List:

- 4 – 1x12 at 34-3/4" – Dividers
- 4 – 1x12 at 63" – Top, Bottom, & Shelves
- 2 – 1x2 at 11-1/4" – Feet



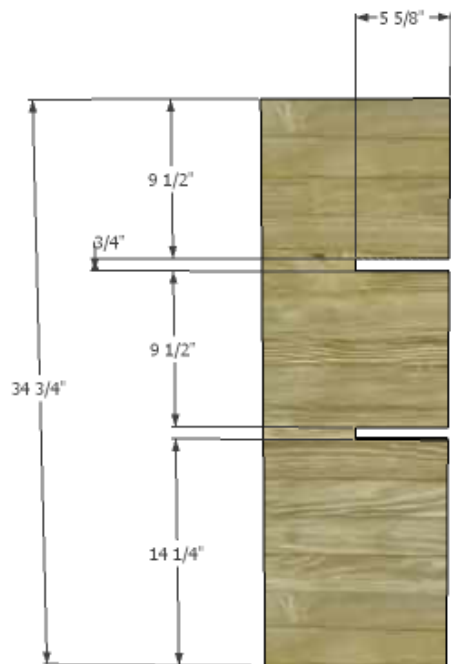
Click on the drawings for a larger view!

Step One

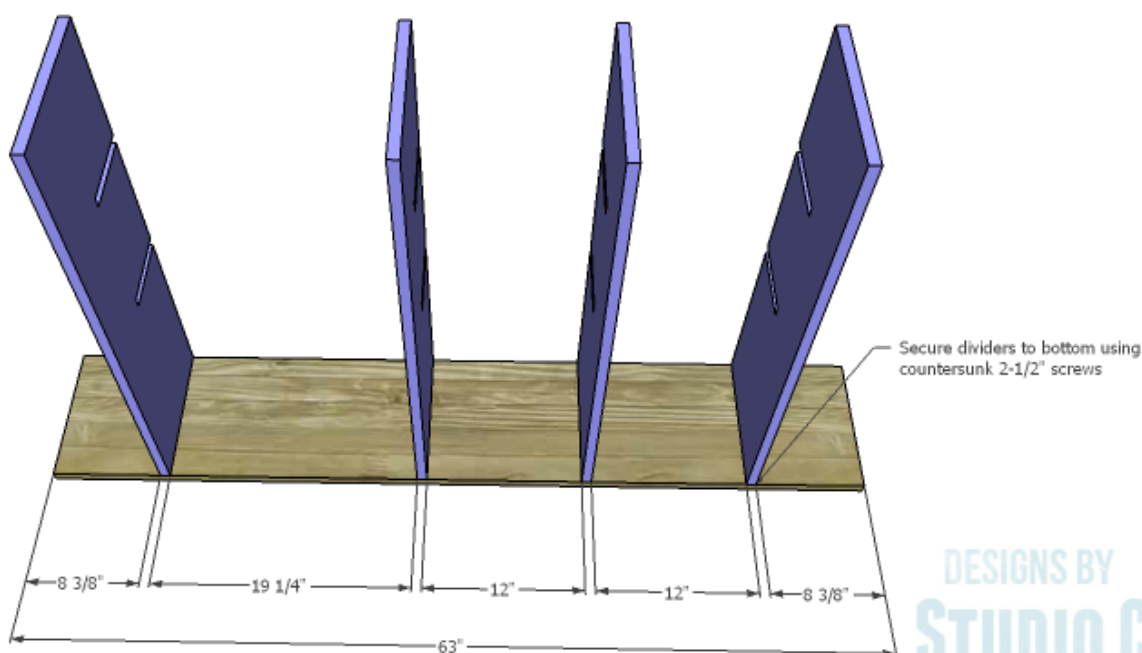
Cut the pieces for the bottom and the dividers. Draw a line at the center of each of the dividers along the length of the boards. Mark the position of the notches. Use a jigsaw and a straight edge (a carpenter's square would be perfect!) to cut

the notches. A chisel can be used to square the inside end of the notch.

Mark the position of the dividers on the bottom board and pre-drill the countersunk holes. Secure the dividers to the bottom using glue and 2-1/2" screws.



DESIGNS BY
STUDIO C

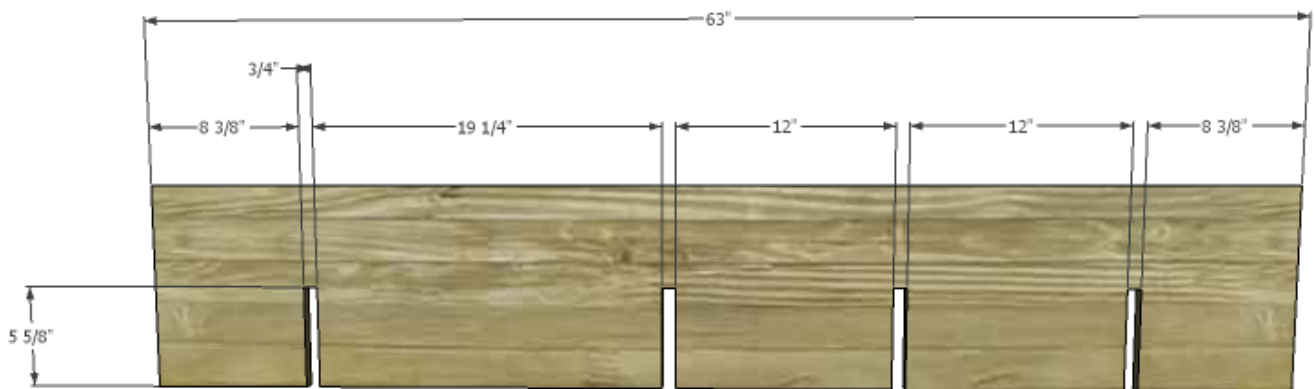


DESIGNS BY
STUDIO C

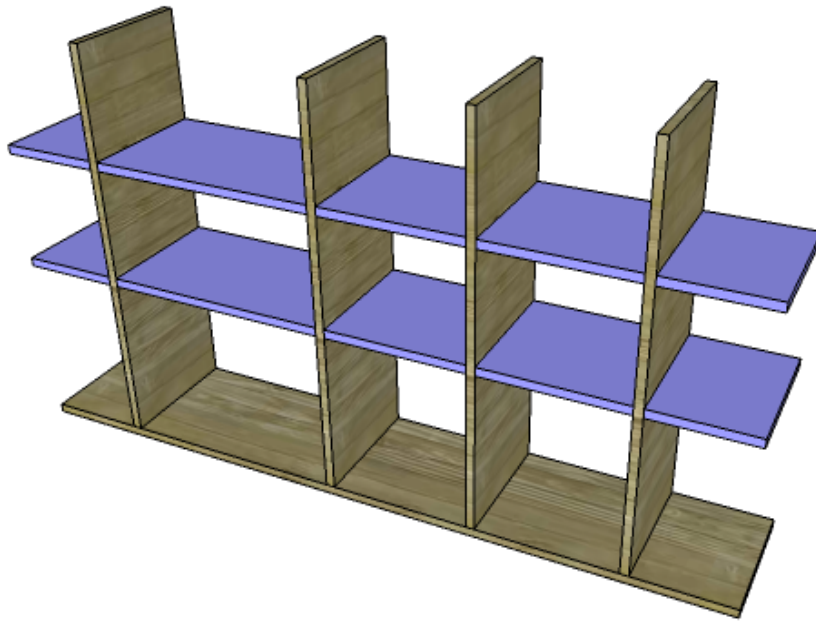
Step Two

Cut the pieces for the shelves. Draw a line at the center of each of the shelves along the length of the boards. Mark the position of the notches. Use a jigsaw and a straight edge (a carpenter's square would be perfect!) to cut the notches. A chisel can be used to square the inside end of the notch.

Slide the shelves onto the dividers. Secure the shelves in place with a few toenailed brad nails. The shelves can also be secured to the dividers using 1" angle brackets.



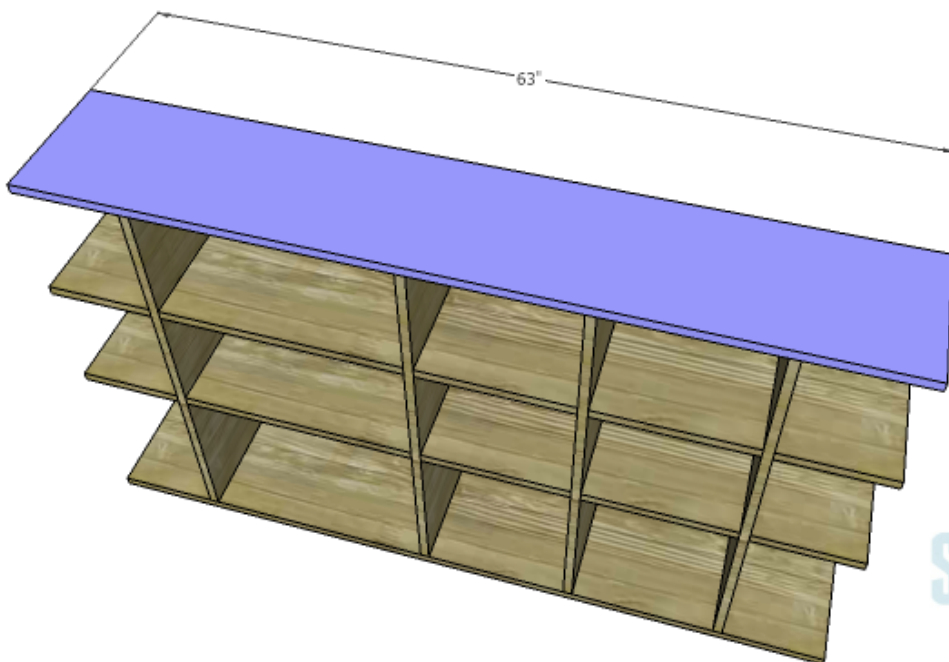
DESIGNS BY
STUDIO C



DESIGNS BY
STUDIO C

Step Three

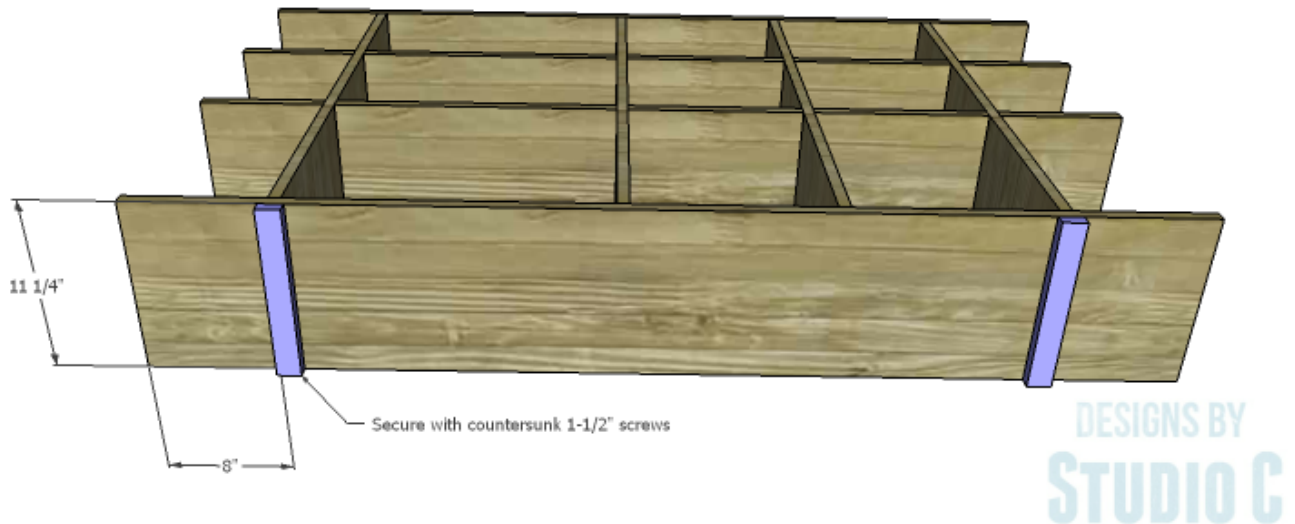
Mark the position of the dividers on the top and pre-drill the countersunk holes. Secure the top to the dividers using glue and 2-1/2" screws.



DESIGNS BY
STUDIO C

Step Four

Cut the pieces for the feet. The feet are completely optional! Secure the feet to the bottom board using glue and countersunk 1-1/2" screws.



Fill the holes in the top, then finish as desired.

This is the perfect piece for any room. The bookcase would be great with bins or crates for kids' toys (when properly secured to the wall) or even as media storage. It would be a great accent as open shelving in a dining room! Have any questions about the DIY plans to build a Bardot Bookcase? Leave a comment below!