

An Easy to Build Bookcase with Adjustable Shelves

DIY Plans to Build an Ashwin Bookcase

This bookcase is a little different from regular bookcases... The DIY plans to build an Ashwin bookcase feature four adjustable shelves with a vertical divider making this piece a great place to store home decor items, fine china or, of course, books! This fabulous bookcase can be completed in a weekend!

build an
ashwin
bookcase



DESIGNS BY STUDIO C

Materials:

- 1-1/4" pocket hole screws
- 1-1/4" brad nails
- 1-3/4" brad nails
- Edge banding

- 16 shelf pins
- Wood glue
- Sandpaper (100, 150, 220 grits)
- Finishing supplies (primer & paint, or stain, sealer)

Lumber:

- 1 – 1×2 at 8′
- 2 – 2×2 at 8′
- 1 – 4′ x 4′ sheet of 1/4″ plywood
- 1 – 4′ x 8′ sheet of 3/4″ plywood

Cut List:

- 4 – 2×2 at 37-1/4″ – Legs
- 4 – 1×2 at 9″ – Side Framing
- 2 – 3/4″ plywood at 9″ x 31-3/4″ – Side Panels
- 2 – 1×2 at 25″ – Stretchers
- 1 – 3/4″ plywood at 9″ x 25″ – Bottom
- 1 – 3/4″ plywood at 12″ x 32-1/2″ – Divider
- 1 – 3/4″ plywood at 12″ x 28″ – Top
- 1 – 1/4″ plywood at 26-1/2″ x 33-1/4″ – Back
- 4 – 3/4″ plywood at 11-7/8″ x 12″ – Shelves



DESIGNS BY
STUDIO C

Click on the drawings for a larger view!

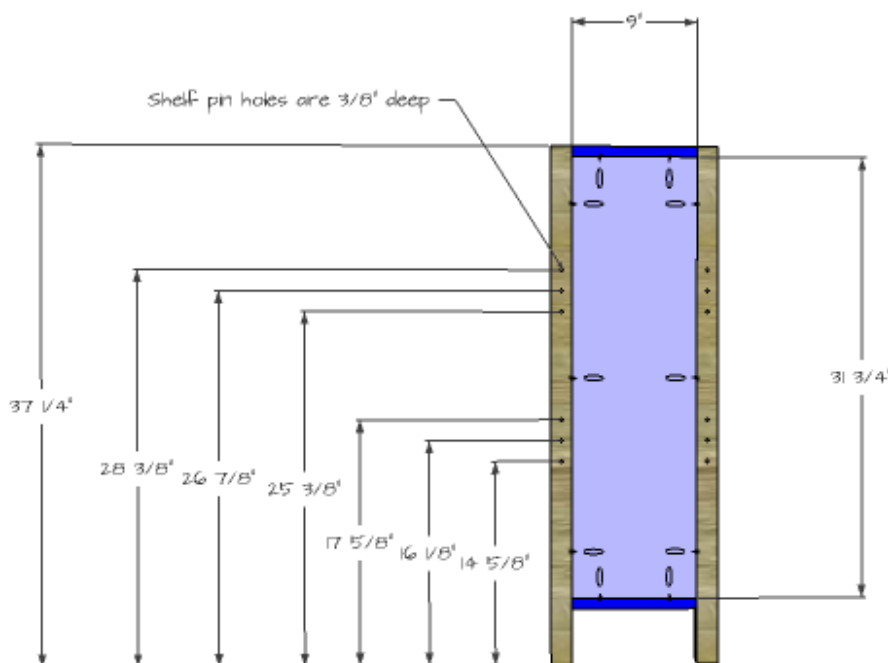
Edge banding will be applied to the exposed edges of the plywood prior to assembly.

Step One

Cut the pieces for the legs, side framing and the side panels. Drill the holes for the shelf pins ($3/8$ " deep) in the legs as shown.

With the pocket hole jig set for $3/4$ " material, drill pocket holes in each end of the framing pieces. Secure the framing to the legs using glue and $1-1/4$ " pocket hole screws.

Drill pocket holes in all four edges of the panels. Secure the panels to the framing using glue and $1-1/4$ " pocket hole screws. The back face of the panel will be flush with the back face of the frame.



DESIGNS BY
STUDIO C

Step Two

Cut the pieces for the stretchers and drill pocket holes in each end. Secure the stretchers to the legs using glue and

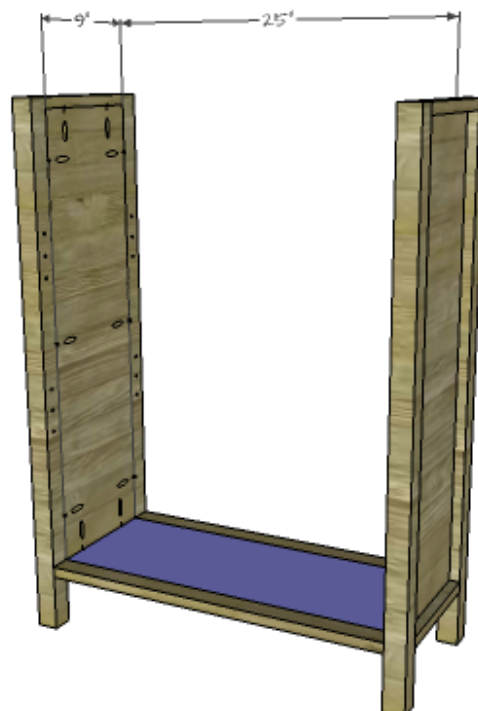
1-1/4" pocket hole screws.



DESIGNS BY
STUDIO C

Step Three

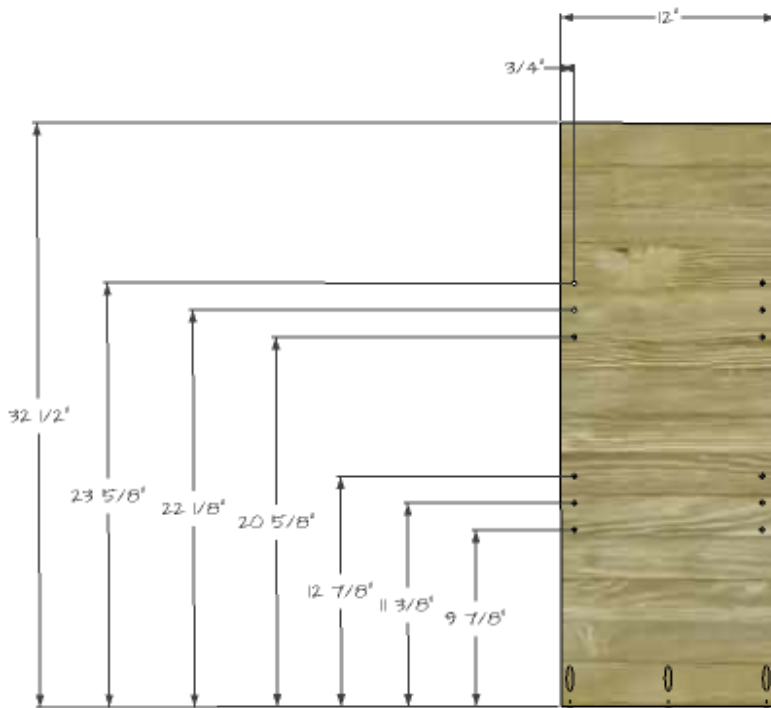
Cut the piece for the bottom and drill pocket holes in all four edges. Secure the bottom to the stretchers and the lower side framing using glue and 1-1/4" pocket hole screws.



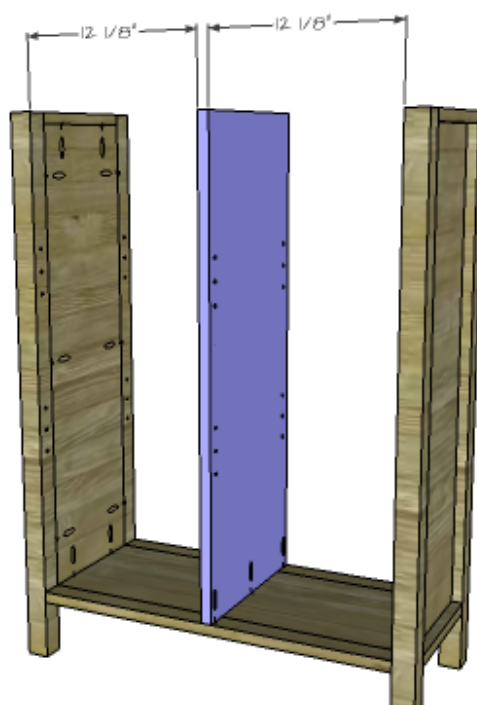
DESIGNS BY
STUDIO C

Step Four

Cut the piece for the divider. Drill the holes for the shelf pins (all the way through the divider) as shown in the drawing. Drill pocket holes at the lower edge. Secure the divider to the bottom using glue and 1-1/4" pocket hole screws.



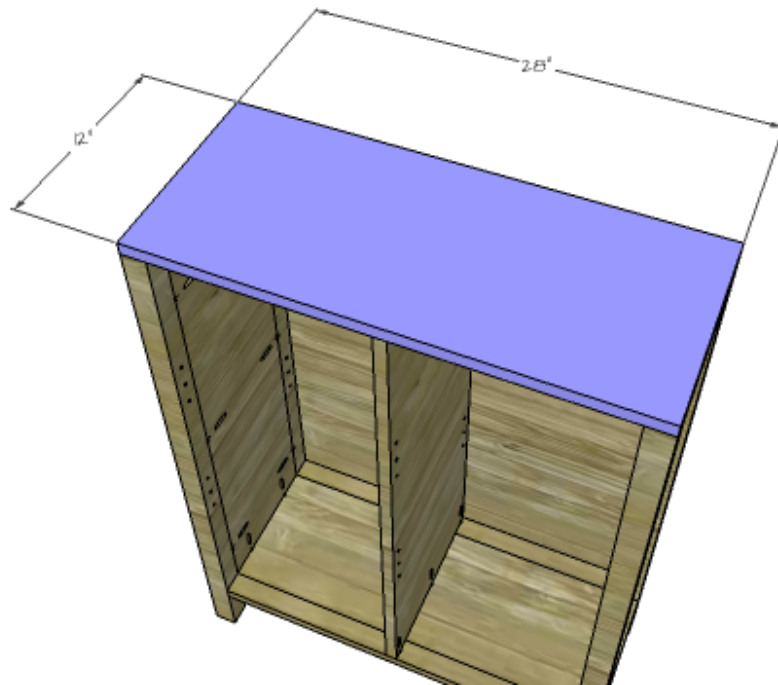
DESIGNS BY
STUDIO C



DESIGNS BY
STUDIO C

Step Five

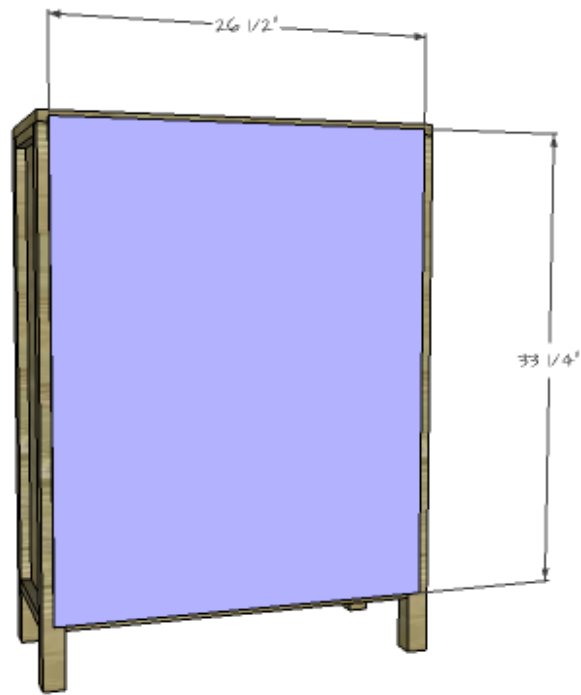
Cut the piece for the top. Secure the top to the side framing and the divider using glue and 1-3/4" brad nails.



DESIGNS BY
STUDIO C

Step Six

Cut the piece for the back. Secure the back using glue and 1-1/4" brad nails.



DESIGNS BY
STUDIO C

Step Seven

Cut the pieces for the shelves. Insert the shelf pins into the holes and place the shelf on the pins. Trim the sides of the shelves, if necessary.



DESIGNS BY
STUDIO C

Finish as desired.

The DIY plans to build an Ashwin Bookcase are perfect for those new to woodworking, as well as those looking for an easy project. Have any questions about the plans? Leave a comment below!