

[DIY Furniture Plans to Build a Simple Mirror Frame](#)

An Easy to Build Frame For an Inexpensive Mirror

My daughter has one of the inexpensive \$5 mirrors in her room (I call them “dorm mirrors”). Every time I walked by her room and saw that mirror, I would remind myself to build a new frame for it so it didn’t look so cheap! Since we are remodeling Big Brother’s room for her to move into, I figured it would be the perfect time to build the frame. The DIY furniture plans to build a simple mirror frame are just that – *simple*! The frame has a 1x4 base with a trim profile along the inside and outside edges. The mirror fits inside the inner opening, and a 1/4” piece of plywood keeps the mirror in place. I knocked this frame out in about two days plus, it matches the [letter jewelry hanger](#) I made for her room!

Build a Simple Mirror Frame

DESIGNS BY STUDIO C





DESIGNS BY
STUDIO C

Materials:

- 1-1/4" pocket hole screws
- Fast-drying adhesive
- Wood glue
- Sandpaper (100, 150, 220 grits)
- Finishing supplies (primer & paint, or stain, sealer)

Tools needed:

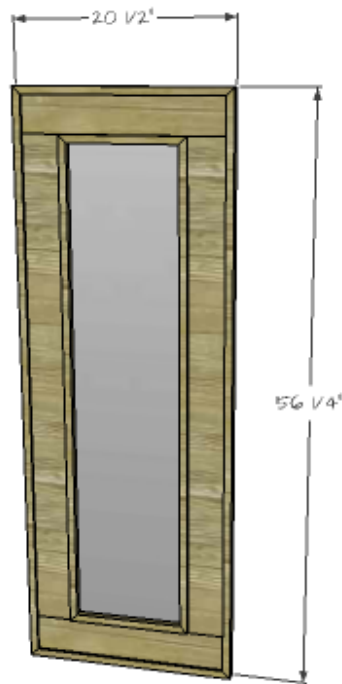
- Miter saw or circular saw
- Table saw, optional
- Drill
- Pocket hole jig

Lumber:

- 4 – 1x4 at 6' **OR**
- 2 – 1x4 at 6'
- 3 – 1" square dowels
- 3 – 3/4" square dowels
- 1 – 2' x 4' sheet of 1/4" plywood

Cut List:

- 2 – 1x4 at 19" – Frame Base
- 2 – 1x4 at 47-3/4" – Frame Base
- 2 – 3/4" square pieces at 12" – Inner Trim
- 2 – 3/4" square pieces at 47-3/4" – Inner Trim
- 2 – 3/4" x 1" pieces at 20-1/2" – Outer Trim
- 2 – 3/4" x 1" pieces at 56-1/4" – Outer Trim
- (If using 1" square dowels, they will be cut to the same length as the 3/4" x 1" pieces.)
- 1 – 1/4" plywood at 12" x 47-3/4" – Back



DESIGNS BY
STUDIO C

Click on the drawings for a larger view!

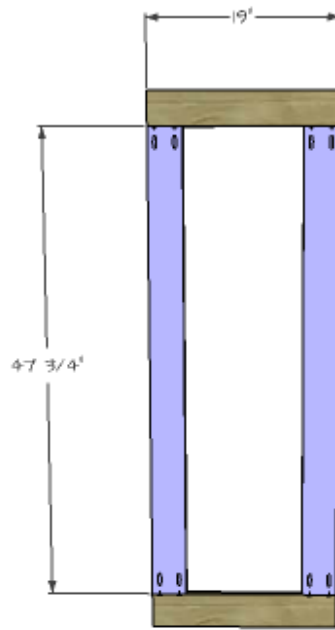
Notes about the project:

I ripped the trim pieces from a 1x4. If you are not comfortable enough to safely rip pieces this narrow on a table saw, use square dowels instead. Most home improvement stores sell them in 3' or 4' lengths.

The mirror I used measured 12" x 47-3/4" without the frame. Measure the mirror you are using before cutting any of the pieces and adjust the plan accordingly.

Step One

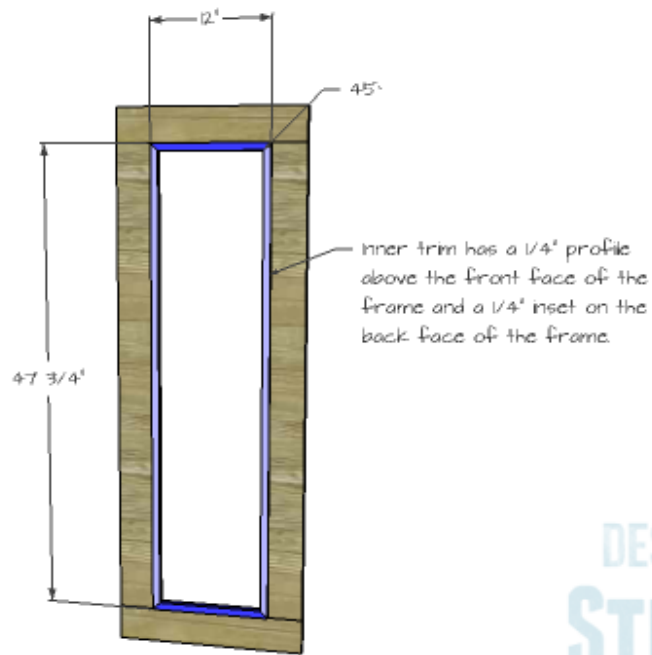
Cut the pieces for the frame base. With the pocket hole jig set for 3/4" material, drill pocket holes in each end of the longer pieces. Assemble the frame using glue and 1-1/4" pocket hole screws.



DESIGNS BY
STUDIO C

Step Two

Cut the pieces for the inner trim (3/4" square). Each piece will have a 45° miter at each end. Make marks on the inside edge of the frame 1/4" from the back. This will allow the trim to create a 1/4" inset on the back of the frame and maintain a 1/4" profile on the front. Secure the trim pieces along the inner edge of the frame base using a fast-drying adhesive and clamp in place until dry.

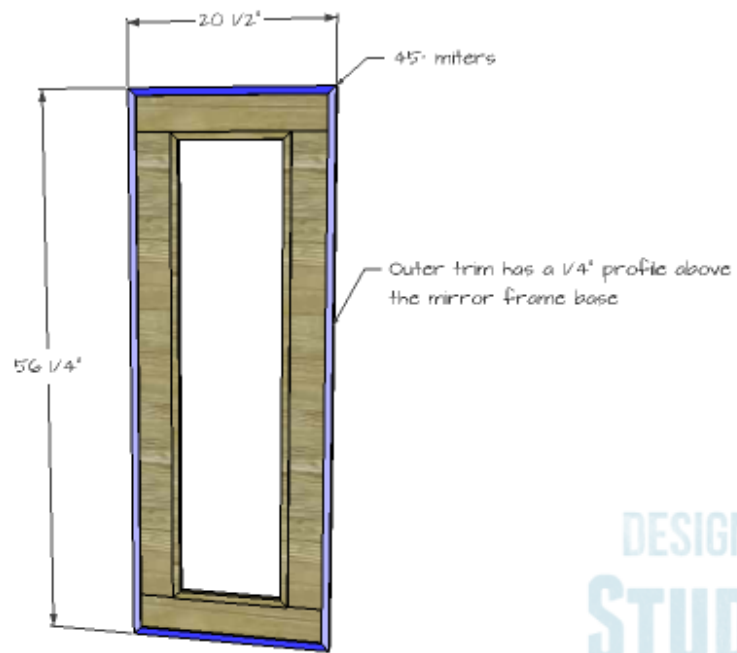


DESIGNS BY
STUDIO C

Step Three

Cut the pieces for the outer trim (3/4" x 1" OR 1" square dowels). Each piece will have a 45° miter at each end. Secure the trim pieces along the outer edge of the frame base using a fast-drying adhesive and clamp in place until dry.

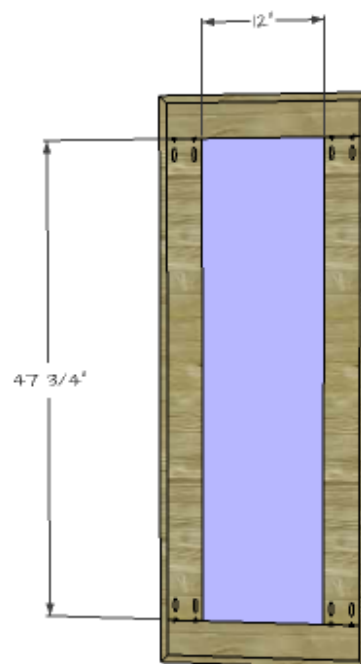
Finish the frame as desired. I used a coat of stain in Kona and finished with two coats of satin polyurethane.



DESIGNS BY
STUDIO C

Step Four

Insert the mirror in the inset on the back of the frame. Cut the 1/4" plywood to fit, then secure in place using washers and screws (I used soda can tabs – see photo!) or duct tape.



DESIGNS BY
STUDIO C



Add a hanger to the back of the frame if desired. My daughter's mirror will just lean against the wall.

Have any questions about the DIY furniture plans to build a simple mirror frame? Leave a comment below – I'm here to help!