

# A Large Pantry Cabinet Perfect for Dry Food Storage

## DIY Furniture Plans to Build a Rustic Pantry Cabinet

While I am still working on my dining room and kitchen update, I noticed the armoire that I use as a pantry is looking a little worse for wear. A cabinet like this would be a welcome addition to the kitchen! The DIY furniture plans to build a Rustic Pantry Cabinet feature shelving on the doors for boxes or cans, as well as ample shelf storage inside for all sorts of other goods. The doors also feature face frames on the outside, and the entire cabinet can be made wider with a few adjustments.

**build a  
rustic  
pantry  
cabinet**

**DESIGNS BY STUDIO C**





DESIGNS BY  
**STUDIO C**

## Materials:

- 1-1/4" pocket hole screws
- 1-1/4" brad nails
- 1-3/4" brad nails
- Edge banding
- Heavy duty strap hinges (like [these](#))
- Wood glue
- Sandpaper (100, 150, 220 grits)
- Finishing supplies (primer & paint, or stain, sealer)

## Tools needed:

- Miter saw or Circular saw
- Table saw
- Iron for edge banding
- Drill
- Pocket hole jig
- Right angle drill attachment (for tight spaces)
- Pneumatic brad nailer with compressor
- Sander

## Lumber:

- 10 – 1/2" x 2-1/2" craft boards, in 3 ft. lengths
- 6 – 1x2 at 8'
- 3 – 1x4 at 8'
- 5 – 1x6 at 6'
- 1 – 4' x 4' sheet of 3/4" plywood
- 3 – 4' x 8' sheets of 3/4" plywood

## Cut List:

- 2 – 3/4" plywood at 18-1/2" x 72" – Sides
- 2 – 3/4" plywood at 18-1/2" x 30" – Top & Bottom
- 2 – 3/4" plywood at 3-1/4" x 30" – Bottom Supports
- 1 – 3/4" plywood at 30" x 67-1/4" – Back
- 10 – 1x2 at 30" – Front & Back Stretchers
- 4 – 3/4" plywood at 17-3/4" x 30" – Shelves
- 4 – 1x6 (ripped to 4-3/4" wide) at 14-3/16" – Door Frame Top & Bottom
- 4 – 1x6 (ripped to 4-3/4" wide) at 71-7/8" – Door Frame Sides
- 2 – 3/4" plywood at 14-3/16" x 70-3/8" – Door Panel
- 18 – 1x4 at 14-3/16" – Door Shelves
- 20 – 1/2" x 2-1/2" craft boards at 14-3/16" – Door Shelf Retainers
- 4 – 1x2 at 71-7/8" – Door Face Frames
- 6 – 1x2 at 12-5/8" – Door Face Frames



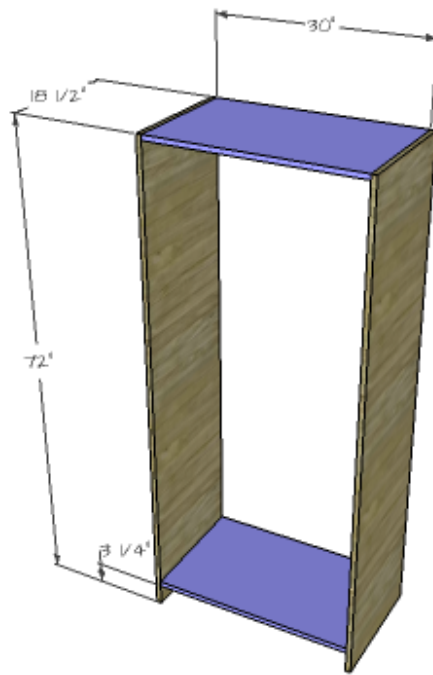
DESIGNS BY  
**STUDIO C**

*Click on the drawings for a larger view!*

*Edge banding will be applied to the exposed edges of the plywood prior to assembly.*

## **Step One**

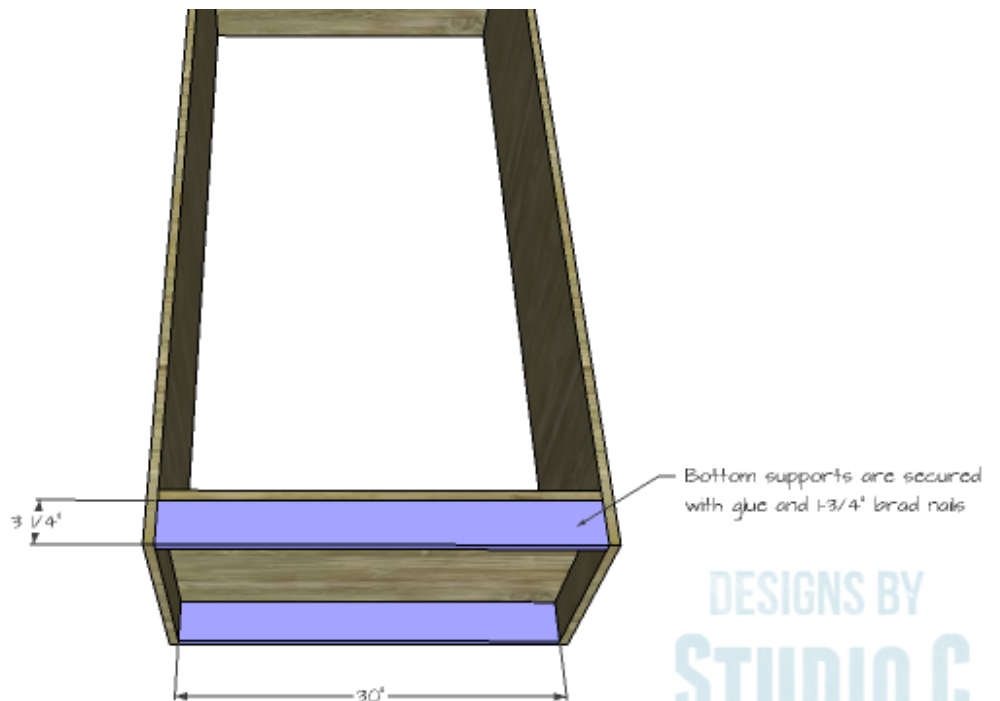
Cut the pieces for the sides, top and bottom. With the pocket hole jig set for 3/4" material, drill pocket holes in each end of the top and bottom pieces. Secure the top and bottom to the sides using glue and 1-1/4" pocket hole screws.



DESIGNS BY  
**STUDIO C**

## Step Two

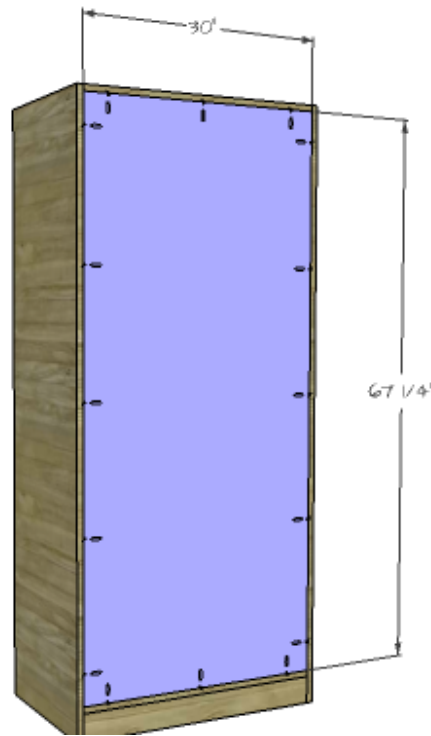
Cut the pieces for the bottom supports. Secure the supports under the bottom shelf using glue and 1-3/4" brad nails through the sides and top of the bottom into the supports.



DESIGNS BY  
**STUDIO C**

## Step Three

Cut the piece for the back and drill pocket holes in all four edges. Secure the back to the sides, top and bottom using glue and 1-1/4" pocket hole screws.



DESIGNS BY  
STUDIO C

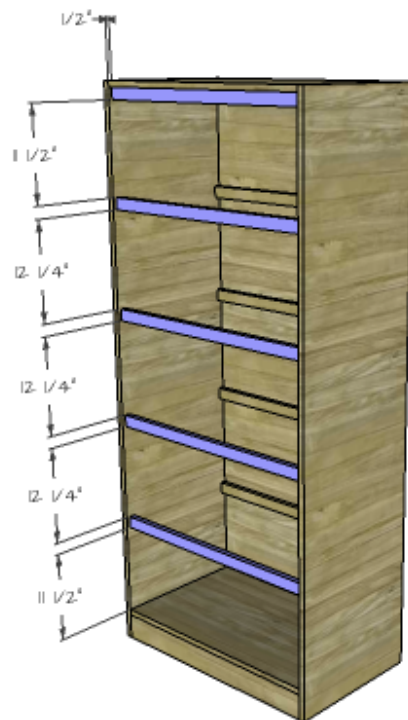
## Step Four

Cut the pieces for the front and back stretchers. The back stretchers will be secured directly to the sides and back using glue and 1-1/4" brad nails.

The front stretchers are secured to the sides – located 1/2" back from the front edge of the sides – using glue and 1-3/4" brad nails through the sides into the ends of the stretchers. Pocket holes can also be drilled in each end and the stretchers secured using glue and 1-1/4" pocket hole screws.



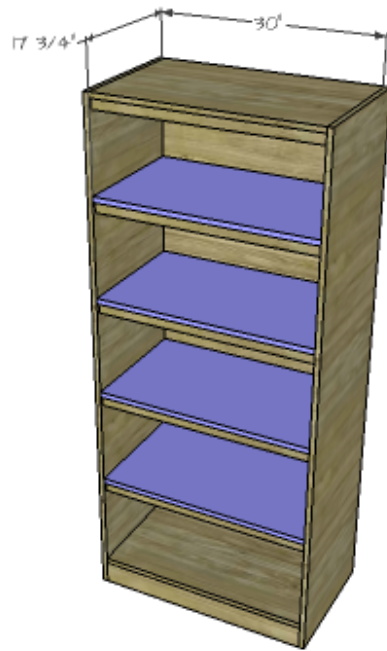
DESIGNS BY  
STUDIO C



DESIGNS BY  
STUDIO C

## Step Five

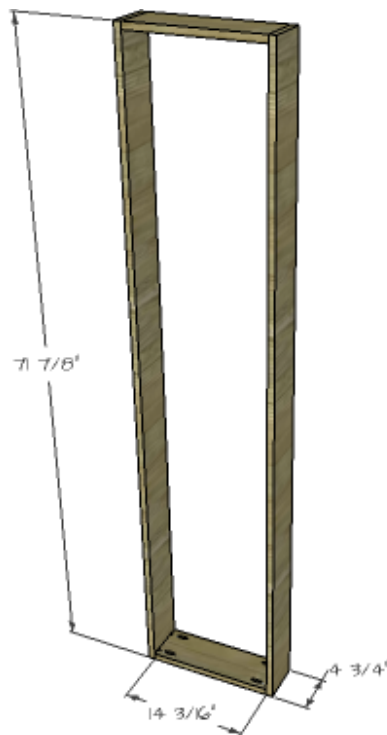
Cut the pieces for the shelves. Rest the shelves on the stretchers and secure in place using glue and 1-3/4" brad nails.



DESIGNS BY  
**STUDIO C**

## Step Six

Cut the pieces for the door frames. Drill pocket holes in each end of the shorter pieces. Assemble the door frame using glue and 1-1/4" pocket hole screws.

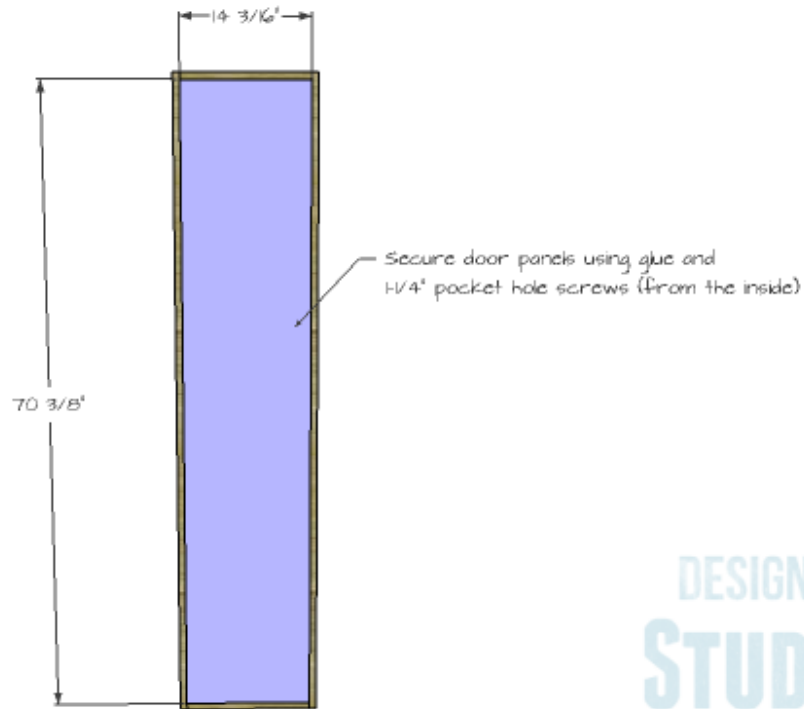


DESIGNS BY  
**STUDIO C**



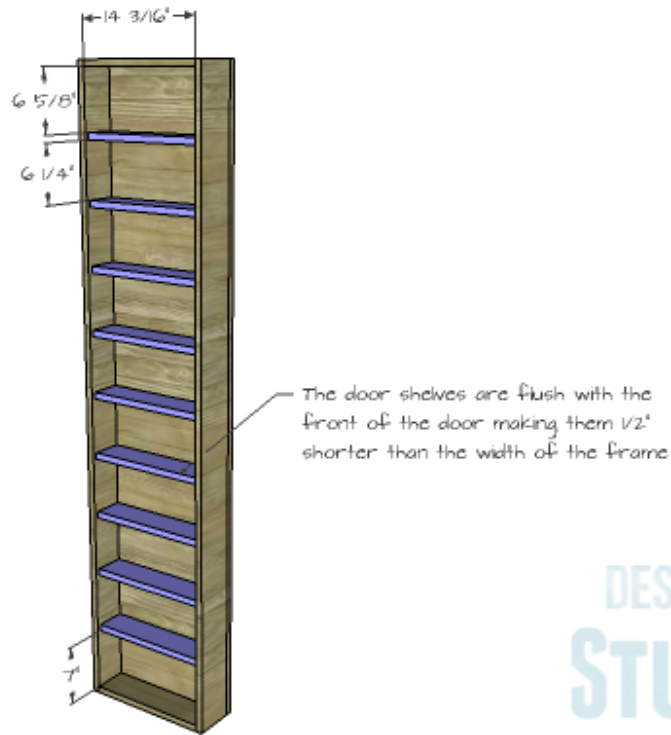
## Step Seven

Cut the pieces for the door panels and drill pocket holes in all four edges. Secure the panels to the frames using glue and 1-1/4" pocket hole screws. The outside face of the panel will be flush with the front edge of the door frames.



## Step Eight

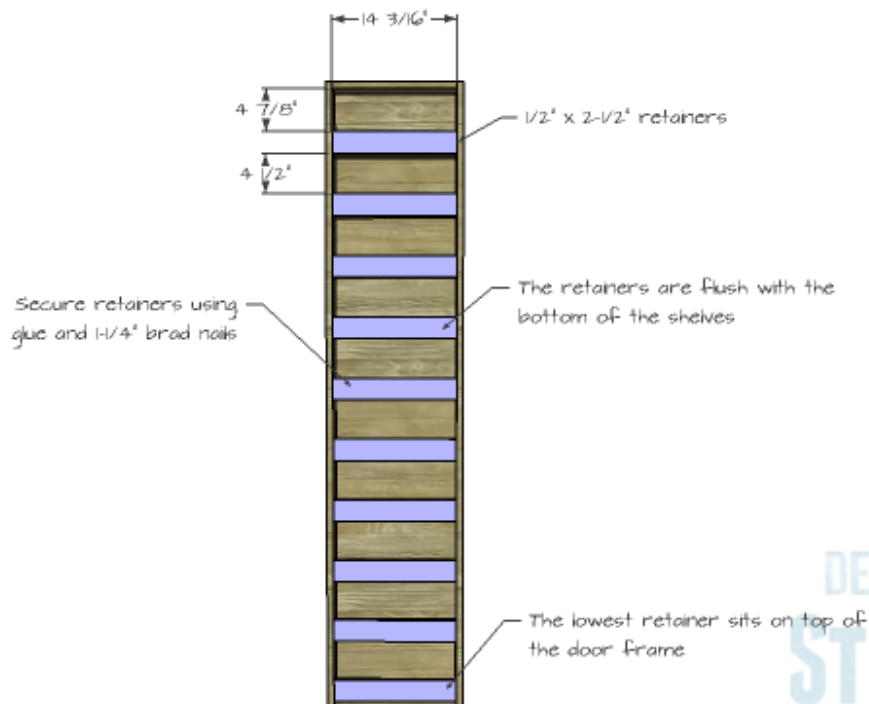
Cut the pieces for the door shelves. Secure the shelves to the door frame sides and panel using glue and 1-3/4" brad nails. The shelves are flush with the back which positions them 1/2" back from the edge of the door frame to allow for the retainers.



DESIGNS BY  
STUDIO C

## Step Nine

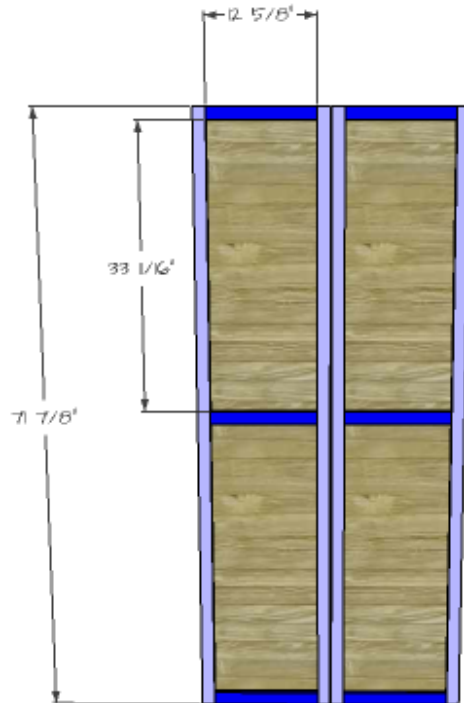
Cut the pieces for the door shelf retainers. Secure the retainers to the front of the shelves with the bottom edges flush using glue and  $1\frac{1}{4}$ " brad nails.



DESIGNS BY  
STUDIO C

## Step Ten

Cut the pieces for the face frames. Secure the face frames to the front of the doors using glue and 1-1/4" brad nails.



DESIGNS BY  
**STUDIO C**

## Step Eleven

Install the hinges. These doors will be heavy and will require heavy-duty hinges like strap hinges. (Plain strap hinges can be spray painted to match your decor.) Don't forget to pre-drill the holes for the screws!

A barrel-bolt can also be used on the front of the doors to keep them closed!

Fill all of the holes and finish as desired.

This armoire would also be a great piece in a craft room for supply storage or as an alternative to a dresser to store clothes. Have any questions about the DIY furniture plans to build a Rustic Pantry Cabinet? Leave a comment below!